

FACTS PAGE



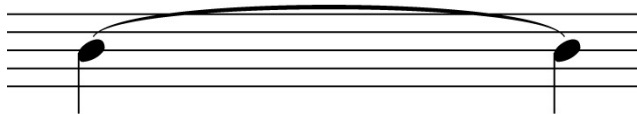
= WHOLE NOTE (COUNT 4)



= HALF NOTE (COUNT 2)

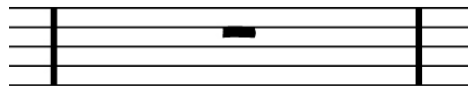


= QUARTER NOTE (COUNT 1)



= SLUR (PASTE TWO NOTES TOGETHER)

4/4 = 4 QUARTER NOTES IN A BAR



= BAR (BETWEEN TWO BARLINES THERE'S A BAR)